

# KAPPA-150/CC

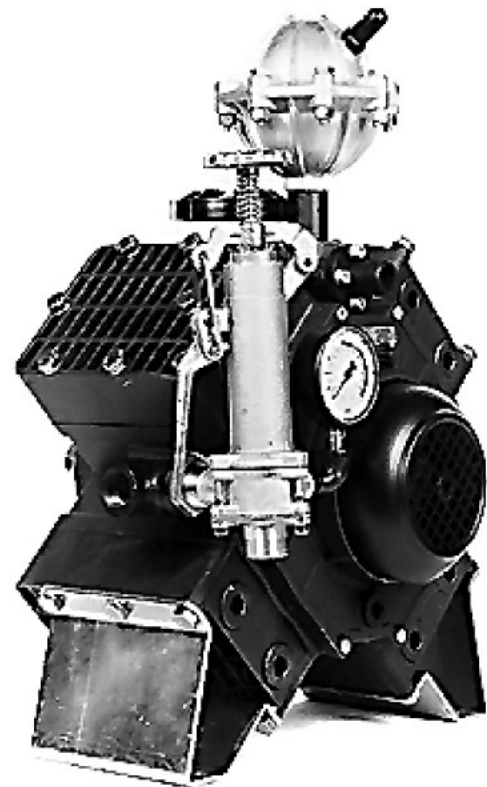
## *High Pressure, High Volume Diaphragm Pump*

KAPPA-150/CC high pressure, high volume diaphragm pumps are excellent for various horticultural and agricultural spraying applications. Simplicity of design and common parts allow easy and affordable maintenance

Liquid handling parts are anodized aluminum, brass and stainless steel. Pulsation dampener, control valve and pressure gauge are standard.

Splined Q2 bushing is available for pulley drive applications

For industrial uses and spraying applications not listed, please consult UDOR U.S.A.



### SPECIFICATIONS

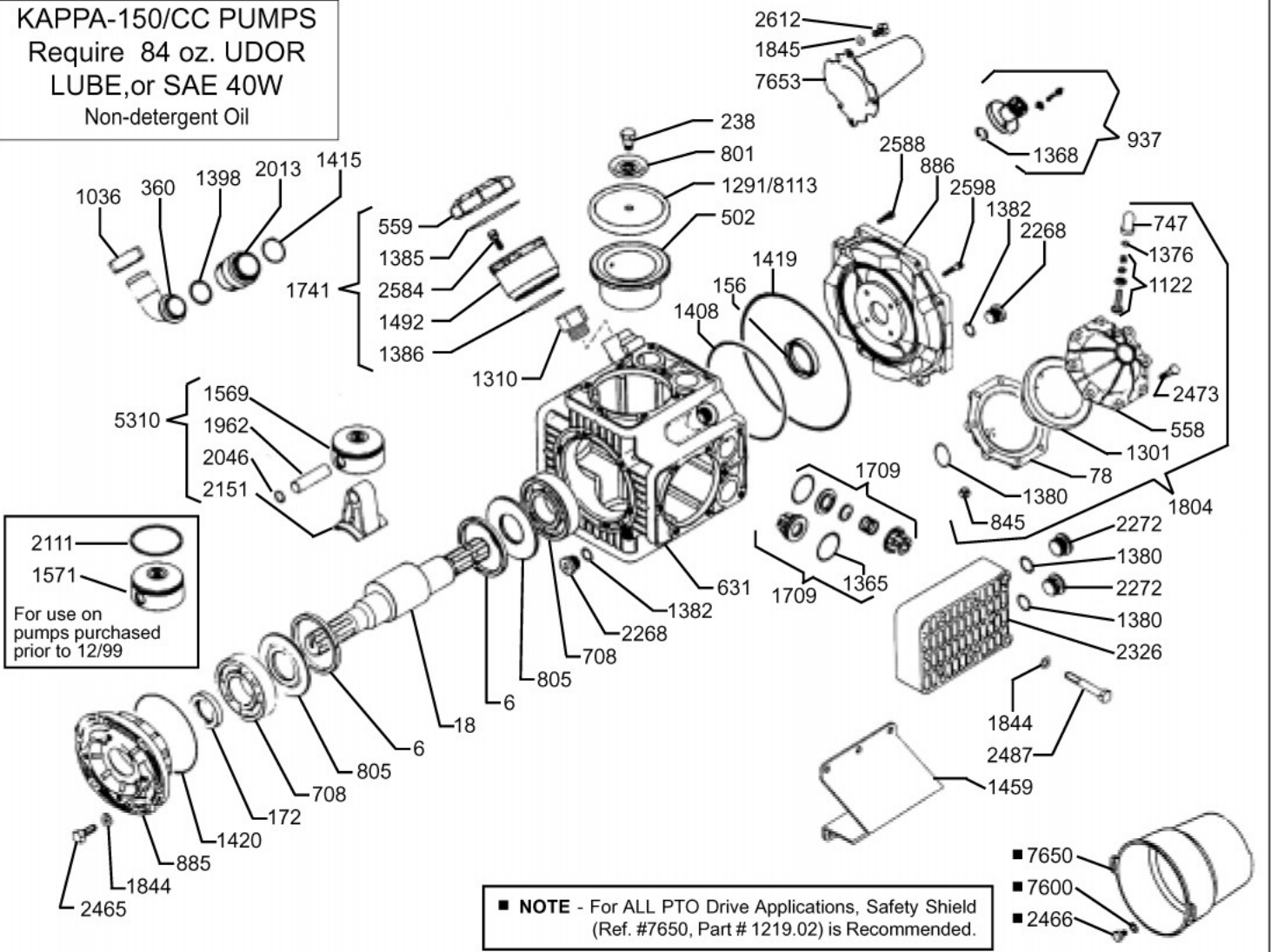
Maximum Flow .....	40 GPM
Maximum Pressure .....	700 PSI
Maximum Pump Speed .....	540 RPM
Maximum Temperature .....	140°F
Ports	
Inlet .....	1-1/2" Hose Barb
Discharge .....	3/4" FNPT & 3/4" MNPT
Bypass .....	1" Hose Barb
Dimensions .....	L-14" x W-19" x H-16.5"
Weight .....	105 lbs.
Diaphragm Material	
Standard .....	DESMOPAN
Optional .....	BUNA-N

**NOTE** - Protect pumps from freezing. If freezing conditions exist, flush pump and system with a 50/50 mixture of anti-freeze and water.

**UDOR U.S.A., INC.**

# KAPPA-150/CC - Exploded View Diagram & Parts List

KAPPA-150/CC PUMPS  
Require 84 oz. UDOR  
LUBE, or SAE 40W  
Non-detergent Oil



REF#	PART#	DESCRIPTION	QTY	REF#	PART#	DESCRIPTION	QTY
6	0001.08	Retainer Ring	2	1415	1101.77	O-Ring	1
18	0002.65	Crankshaft	1	1419	1101.80	O-Ring	1
78	0003.10	Pressure Accumulator	1	1420	1101.71	O-Ring	1
156	0007.02	Seal	1	1459	1202.36	Mounting Rails	2
172	0007.34	Seal	1	1492	1203.30	Oil Reservoir	1
238	0102.03	Diaphragm Bolt	4	1569	1205.06	Piston	4
360	0202.84	Suction Elbow	1	1571	1205.08	Piston - Prior to 12/99	4
502	0206.29	Piston Sleeve	4	1709	6006.08	Valve Assembly	8
558	0208.21	Accumulator Head	1	1741	6033.02	Oil Reservoir Assembly	1
559	0208.22	Oil Cap	1	1804	6031.02	Accumulator Assembly	1
631	0209.33	Pump Body	1	1844	1403.09	Washer	26
708	0214.16	Bearing	2	1845	1403.10	Washer	2
747	0218.01	Air Valve Cap	1	1962	1502.01	Connecting Rod Pin	4
801	0301.07	Retainer Washer	4	2013	1504.04	Nipple	1
805	0301.34	Washer	2	2046	1506.02	Snap Ring	8
845	0303.01	Nut	8	2111	1509.05	Piston Ring - Prior to 12/99	4
885	0501.81	Bearing Retainer	1	2151	1519.17	Connecting Rod	4
886	0501.80	Body Flange	1	2268	1603.32	Body Plug	2
937	0508.03/K	3/4" MNPT Outlet	1	2272	1603.40	Head Plug	8
1036	0604.48	Suction Nut, Brass	1	2326	1604.51	Head	4
1122	0608.15	Air Valve Assembly	1	2465	1804.03	Bolt, M10 x 30	6
1291	0903.02	Piston Diaphragm (BUNA-N)	4	2466	1804.06	Bolt	2
*1301	0903.16	Accumulator Diaphragm	1	2473	1804.54	Bolt, M8 x 40	8
1310	1001.04	3/4" Adapter Fitting	1	2487	1804.25	Bolt, M10 x 75	32
*1365	1101.01	O-Ring	8	2584	1805.06	Bolt, M6 x 20	3
1368	1101.04	O-Ring	1	2588	1805.21	Bolt, M6 x 22	8
1376	1101.16	O-Ring	1	2598	1805.31	Bolt, M6 x 30	4
1380	1101.25	O-Ring	9	2612	1805.47	Bolt	2
1382	1101.29	O-Ring	2	5310	6015.36	Piston/Rod Assembly	4
1385	1101.32	O-Ring	1	7600	1403.36	Washer	2
1386	1101.33	O-Ring	1	7650	1219.02	PTO Safety Shield	1
1398	1101.42	O-Ring	1	7653	1219.15	Thru-Shaft Protector	1
1408	1101.63	O-Ring	1	*8113	0903.34	Piston Diaphragm (DESMOPAN)	4

\* Parts Included in Diaphragm Repair Kit - #8700.22. (Also available in Buna-N - #8700.21.)