

# 6047.06 & 6047.06/LP

*Pump or Remote Mounted Control Unit*

The 6047-06 & 6047.06/LP are pump or remote mounted control units. They have right angle entry from the main body to the adjustable pressure regulator for smoother operation and longer life. They include a manual dump valve, two (2) 1/2" ball valve discharge ports, and pressure gauge.

Liquid handling parts are black anodized aluminum, stainless steel, and glass-filled nylon.

The 6047.06 is standard on KAPPA-75 & KAPPA-100 pumps,

The 6047.06/LP is fitted with a lighter spring and gauge for lower pressure applications and is recommended for RO-70 pumps.



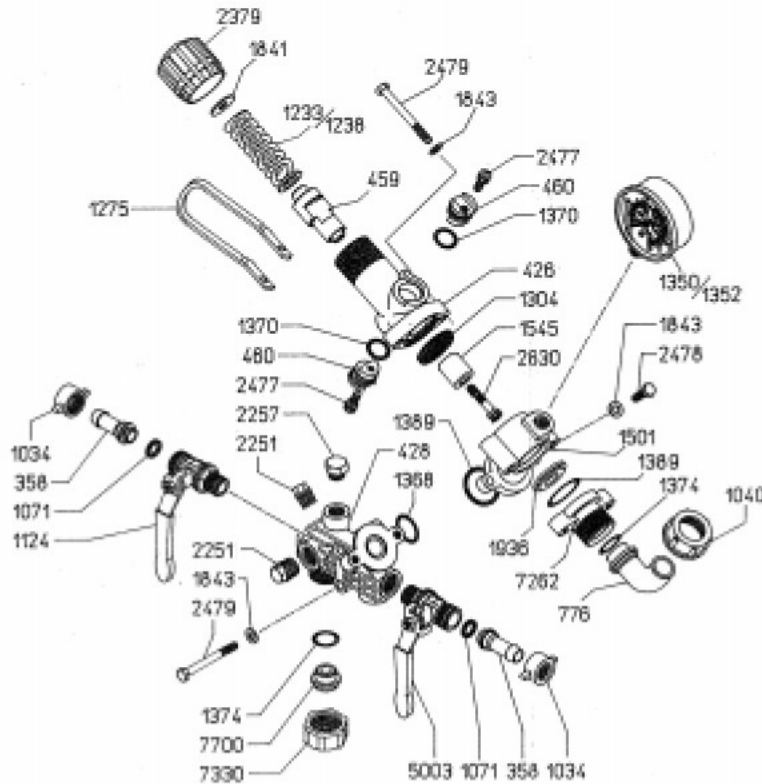
## SPECIFICATIONS

Maximum Flow .....	26 GPM
Maximum Pressure	
6047.06 .....	560 PSI
6047.06/LP .....	350 PSI
Discharge Ports	
Standard .....	(2) 1/2" Ball Valve
Optional .....	3/4" FNPT (part # 207P-12)
Dimensions .....	L-8" x W-3" x H-9.5"
Weight .....	5 lbs.

**UDOR U.S.A., INC.**

# 6047.06 & 6047.06/LP CONTROL UNITS

## Parts List and Operating Instructions



Ref #	Part #	Qty.	Description
	358	2	1/2" Hose Barb
	426	1	Valve Body
	428	1	Main Body
	459	1	Valve Cylinder
	460	2	Valve Cylinder Cam
	776	1	Bypass Elbow Hose Barb
	1034	2	Discharge Barb Nut
	1040	1	Bypass Barb Nut
	1071	2	Gasket
	1124	1	Ball Valve (Left)
	1233	1	Spring (6047.06)
	1238	1	Spring, 350# (6047.06/LP)
	1275	1	Dump Valve Lever
	*1304	1	Diaphragm
	1350	1	Gauge (6047.06)
	1352	1	Gauge (6047.06/LP)
	*1368	1	O-Ring
	*1370	2	O-Ring
	1374	1	O-Ring
	*1389	2	O-Ring
	1501	1	Adapter Flange
	*1545	1	Poppet (Steel)
	1841	1	Washer
	1843	1	Washer
	*1936	1	Seat
	2251	2	Plug
	2257	1	Plug
	2379	1	Adjustment Knob
	2477	2	Bolt
	2478	2	Bolt
	2479	4	Bolt
	*2630	1	S.S. Bolt
	5003	1	Ball Valve (Right)
	7262	1	Bypass Flange
	7330	1	Nut
	7700	1	Plug

\* PARTS INCLUDED IN REPAIR KIT 8701.02

\*NOTE: 8701.02 is the only repair kit to be used in Control Unit 6047.06.

The Control unit has a manual dump valve, pressure control knob, glycerin-filled pressure gauge and two ball valve discharge ports. Optional 3/4" NPT outlets are available - consult UDOR U.S.A. for details.

1. Before operating or re-operating pump, push the manual dump valve lever (Ref. #1275) down so the pump will start at zero pressure. **FAILURE TO DO SO WILL VOID PUMP WARRANTY.**
2. Turn red pressure adjusting knob (Ref. #2379) counter-clockwise to relieve spring tension.  
NOTE: Step 2 applies only to initial start-up, and is not necessary in daily operation of pump.
3. Start unit and let run until air is evacuated from system, when only liquid is expelled from the by-pass line.
4. Return dump valve lever to the UP position. Open spray gun or spray boom and turn the red pressure adjustment knob (Ref. #2379) clockwise until desired operating pressure is achieved.

**NOTE: Protect pump from freezing. If freezing conditions exist, flush pump with a 50/50 mixture of anti-freeze and water.**